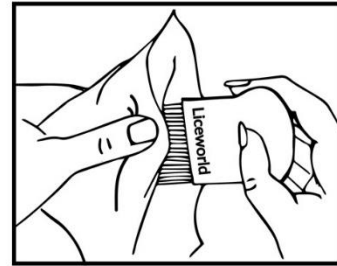
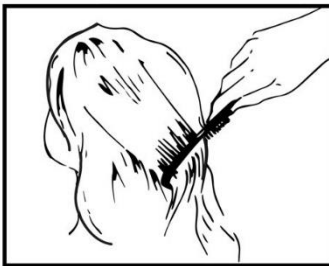


How to check for head lice

Check your children's' hair for head lice at least once a week.

This is how you do it:

- Use a proper head lice comb with the correct distance between the teeth
- Use a conditioner
- Take your time to comb the hair thoroughly
- If you find live head lice, start a treatment immediately and remember to inform day care, school and friends



Start by combing the hair with a hair comb or a hairbrush. Then part the hair in sections, to make sure you comb all the hair. Make sure to check the head lice comb for head lice by wiping it in a white paper towel. Use enough light, and a magnifier if you need to.

More information about head lice? Visit liceworld.com or ask your local school nurse or pharmacist.

Head lice are very tiny. Below you can see how they look (not actual sizes):



Adult. Size of a sesame seed. Color grey or brown.

Nymph. Smaller than the adult head lice. Color grey or brown.

Nit. Size of a grain of sand. Color white or light brown.

Read more on www.liceworld.com